

# Report to Council



**Date:** July 16, 2012  
**File:** 1310-30  
**To:** City Manager  
**From:** K.Bouw, Building & Facility Planner  
**Subject:** Relocation of Public Art in City Park

---

## Recommendations:

THAT Council receives, for information, the Report from the Building & Facility Planner dated July 16, 2012 regarding the relocation of 2 pieces from the City's public art collection; *Renaissance of a Tree* and *Zephyr* in City Park as a part of the design of the new washroom building and concession plaza;

AND THAT Council directs staff to proceed with the relocation of the sculptures in City Park.

## Purpose:

The March 28, 2012 Report to Council on the City Park Pavilion Fire Claim - City Hall Renovations, from the Director of Infrastructure Planning identified that staff would report back to Council with a report for the use of the public art funds for the relocation of public art in City Park as part of the Washroom and Concession Area project.

## Background:

The March 6, 2011 fire at the City Park Pavilion has resulted in the redesign of the site for a new washroom facility and mobile concession stands as well as a small community event space. The redesign of this portion of City Park will create a new public plaza within the park to support the children's spray park and park users with construction planned for autumn 2012 (Attachment 1).


Staff are recommending the relocation of the sculptures *Renaissance of a Tree* by Peter Ryan and *Zephyr* by ie creative into the redesigned City Park concession plaza (Attachment 2).

## Renaissance of a Tree

The wood sculpture was originally carved in 1999 from the remains of a large cottonwood tree that was damaged and felled during a windstorm in 1997. The piece was designed to symbolize the successful return of the peregrine falcon to the Okanagan after 40 years of absence, as the result of a collaborative local community support program.

The sculpture's base was re-carved by the original artist, Peter Ryan in 2008 to replace the original base that was deteriorating.

The sculpture was originally oriented to mark the edge of the Pavilion building and concession space, which has now been demolished. The new location will act as a gateway to the plaza near the round-about and drop-off area and will frame the edge of the concession plaza.



### Zephyr

Zephyr was installed on the south side of Highway 97 at the end of the WRB Bridge in 2010. The art work is 8.0 m high and 10.0 m long constructed of polished steel and represents the auspicious breezes from Okanagan Lake.

In its current location at the east landing of the WR Bennett Bridge, the piece is difficult to view when driving past and the scale is not appropriate as a gateway statement into the City. Staff recommend relocating the sculpture to the northern edge of the City Park concession plaza to create an attractive focal point along the City Park promenade.

The relocation of Zephyr as a part of the City Park washroom / concession plaza will achieve the following objectives:

- The piece will create an attractive focal point along the City Park promenade and gateway into the new plaza;
- The new location creates a stronger connection with the lake;
- The height of the sculpture will be lowered to allow pedestrians to appreciate the craftsmanship of the piece; and
- The new location could also serve as a landmark and wayfinding marker in the park for community events and activities.

The artists for both sculptures have been involved in the relocation plan.

The existing Zephyr site has the infrastructure (irrigation, electrical connections etc.) suitable for a potential future gateway feature / entrance signage for the City.

### **Internal Circulation:**

General Manager, Community Sustainability  
Director, Communications  
Manager, Parks & Public Spaces  
Manager, Utility & Building Projects Manager

### **Financial/Budgetary Considerations:**

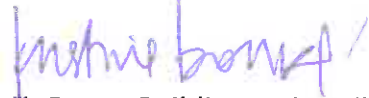
The estimated cost of the relocation of the sculptures is \$15,000 to be funded from the existing 2012 Public Art allocation.

### **Communications Comments:**

#### **Considerations not applicable to this report:**

Existing Policy  
Legal/Statutory Authority  
Legal/Statutory Procedural Requirements  
External Agency/Public Comments  
Personnel Implications  
Alternate Recommendation

Submitted by:



K. Bouw, Building and Facilities Planner

Approved for inclusion:



R. Cleveland, Director, Infrastructure Planning

Cc:

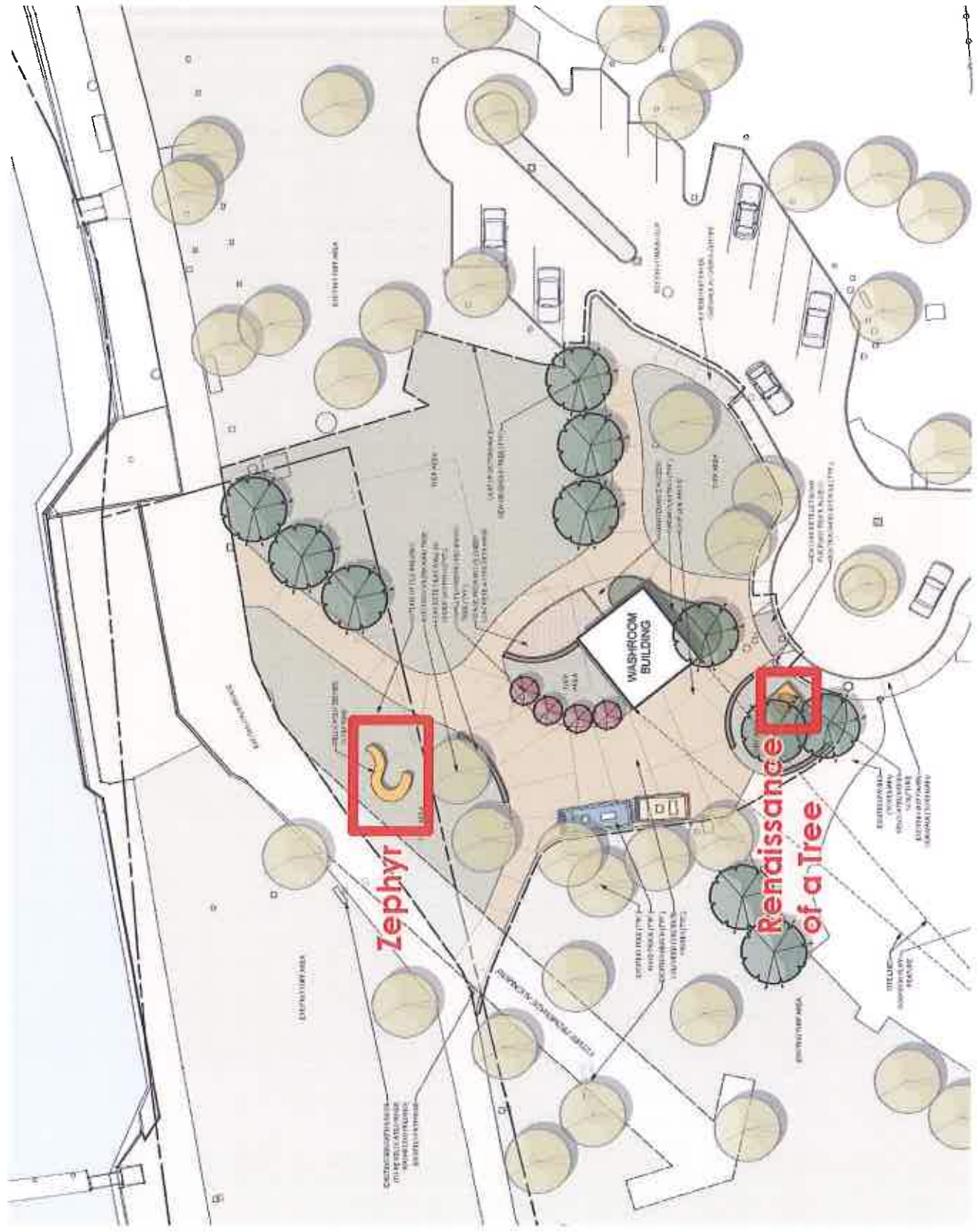
General Manager, Community Sustainability

Director, Communications

Manager, Parks & Public Spaces

Manager, Building Services

Manager, Cultural Services



ATTACHMENT 1: City Park Concession Plaza Site Plan



Renaissance of a Tree



Zephyr



## ATTACHMENT 2: Public Art to be Relocated



